

The Festivities Begin...





Actual image of Hiranandani Fortune City, Panvel



Foreword	04
Handovers	06
Project updates	20
Leasing Desk	36
Activities by Hiranandani Trust School	38
A bird's eye view of the projects under construction	40
Other projects by Hiranandani Communities	47

Foreword

Joy & enthusiasm fills the entire atmosphere at Hiranandani Fortune City. With handovers ongoing at full swing, we wish our patrons, a life full of celebrations for the years to come.

Families have started taking possession and started doing up the interiors for their respective residences. With 100+ residences already occupied in Apollo & Athena along with commencement of the school; the laughter & activities have added to the festivities. We are also happy to announce music, dance & karate classes for young and old alike. The beautifully landscaped podium with gazebo's and children play areas are now ready for you to come and experience the place. Construction of other supporting amenities is progressing well.

Our projects under construction are progressing as per the expected timelines. Along with the towers, the superstructure of the podium is being developed rapidly. Simultaneously, leasing activities have started for Hiranandani Business Park, with 'Yotta' being it's first corporate to start its operations.

The Editorial Team,
Hiranandani Communities



Actual image of Hiranandani Fortune City, Panvel

Handovers

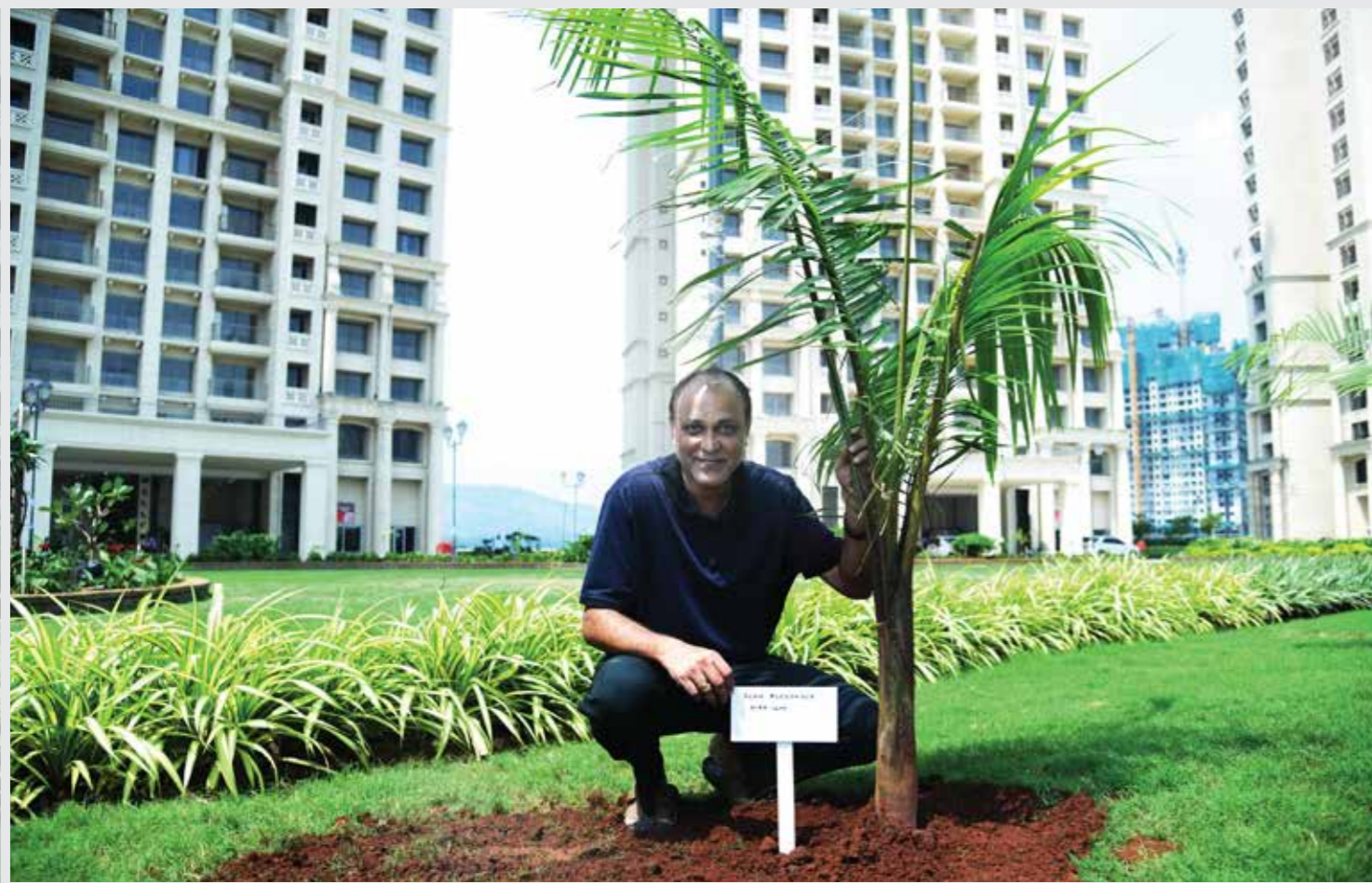
Hiranandani Communities is happy to announce the handing over of apartments for our O.C. received projects. The first of many...



Handovers



Handovers



Handovers



Handovers



Handovers



Handovers



Project Updates - Atlas



Actual image of completed living room



Actual image of completed master bedroom



Actual image of completed kitchen



Actual image of completed bedroom



Actual image of completed restroom

Project Updates - **Minerva**



Actual image of completed living room



Actual image of completed dining space



Actual image of completed kitchen



Actual image of completed bedroom



Actual image of completed master bedroom

Project Updates - Aurora



Actual image of completed living room



Actual image of completed bedroom



Actual image of completed kitchen



Actual image of completed restroom



Actual image of completed master bedroom

Project Updates - Aura



Actual image of completed living room



Actual image of completed bedroom



Actual image of completed dining space

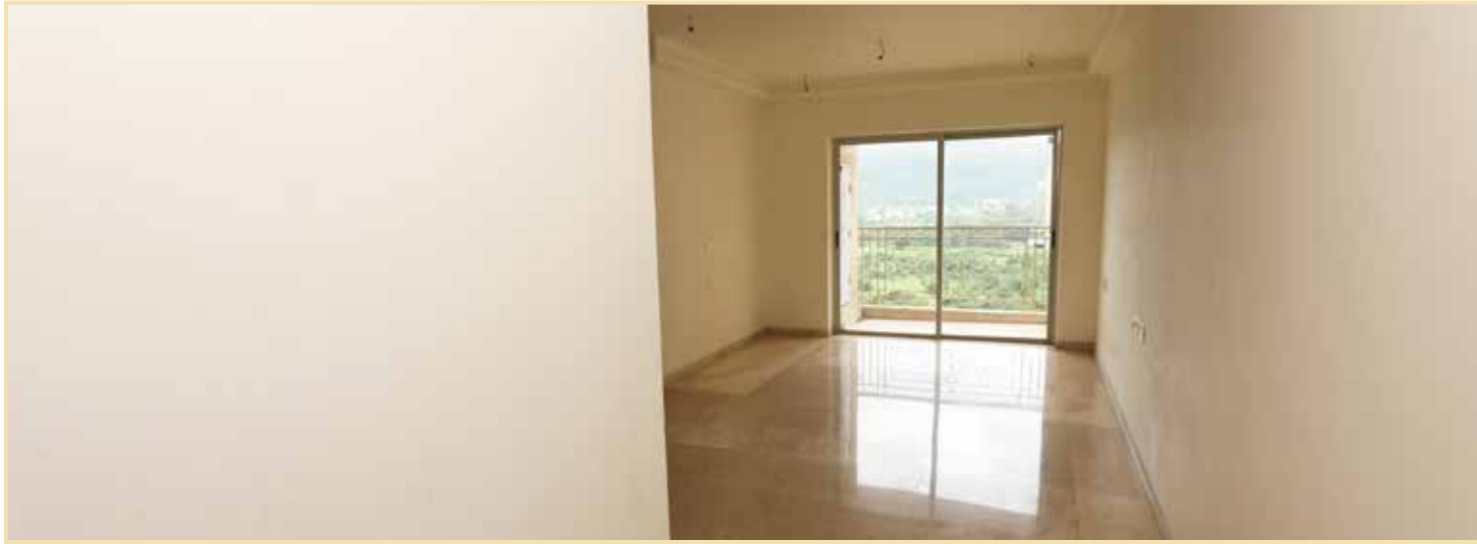


Actual image of completed kitchen



Actual image of completed master bedroom

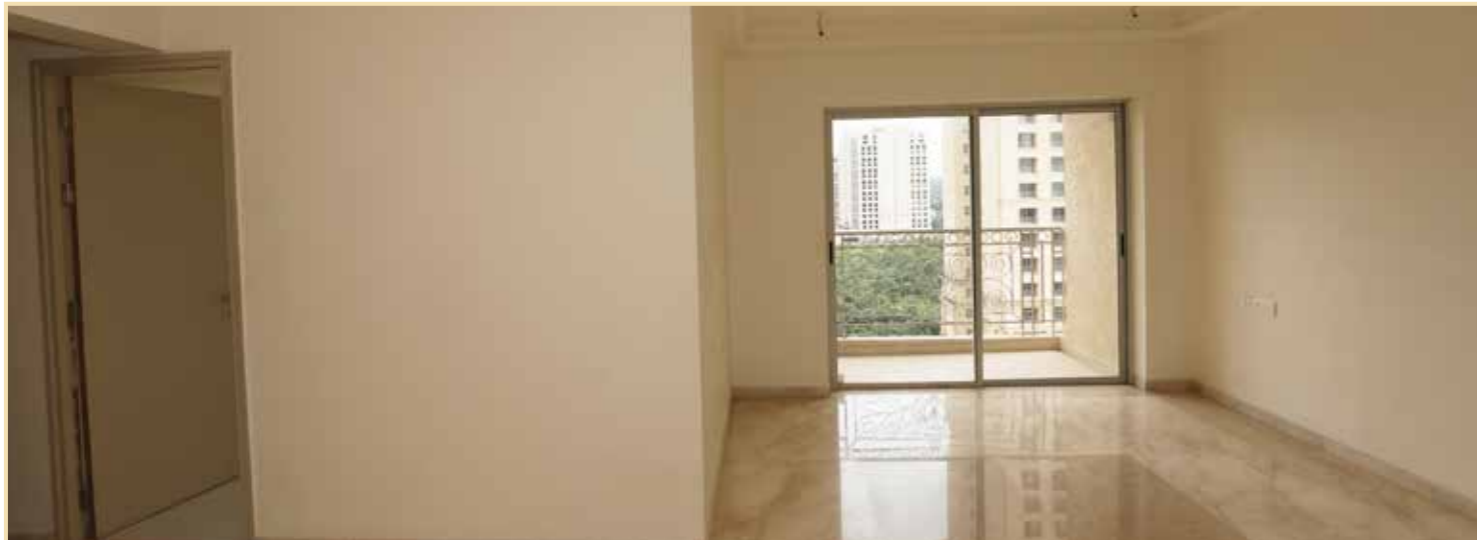
Project Updates - Argus



Actual image of completed living room



Actual image of completed bedroom



Actual image of completed dining space



Actual image of completed kitchen

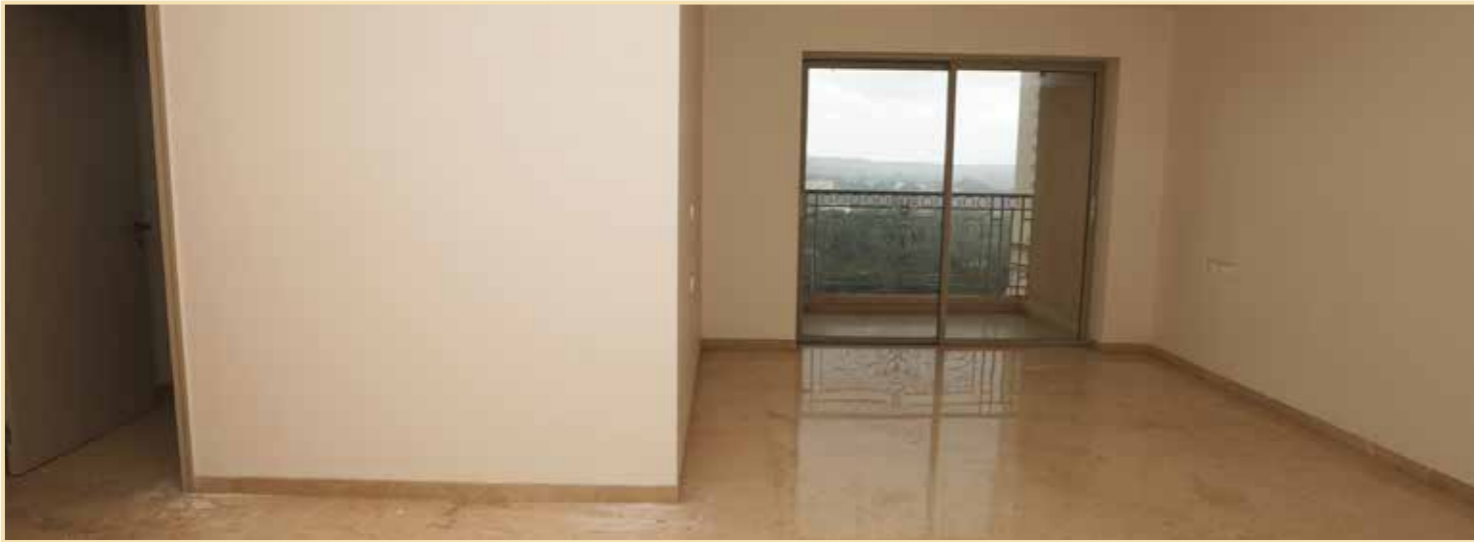


Actual image of completed master bedroom



Actual image of completed restroom

Project Updates - Clio



Actual image of completed living room



Actual image of completed dining space



Actual image of completed kitchen



Actual image of completed bedroom



Actual image of completed master bedroom

Project Updates - Helios



Actual image of completed living room



Actual image of completed dining space



Actual image of completed kitchen



Actual image of completed bedroom



Actual image of completed master bedroom

Project Updates - **Hermes**



Actual image of completed living room



Actual image of completed bedroom 2



Actual image of completed kitchen



Actual image of completed bedroom 1



Actual image of completed bedroom 3

Leasing Desk



Actual Images of Apollo & Athena

Hiranandani Communities offers rental flats for a couple of its ready & functional residential buildings; Apollo and Athena. These 11 storeyed buildings offer spacious 1 BHK apartments, a perfect fit for a family working close-by. Many families have already started calling these rented apartments their home.

Spacious and airy apartments equipped with all the basic utilities.

- ▶ 2 PASSENGER LIFTS PER BUILDING
- ▶ ABUNDANT WATER & POWER SUPPLY
- ▶ 24-HOUR SECURITY & CCTV SURVEILLANCE
- ▶ PIPED GAS
- ▶ FIRE-FIGHTING SYSTEM

A list of other conveniences in the vicinity



EDUCATIONAL INSTITUTES

Hiranandani Trust School	- 0 mins
St. Wilfred's School	- 7 mins
St. Wilfred's College of Arts, Commerce & Science	- 7 mins
Pillai HOCL Educational Campus	- 10 mins
St. Xavier's English High School	- 13 mins
Swami Vivekanand Societies School	- 15 mins
Amity University, Panvel	- 18 mins
DAV Public School	- 20 mins
New Horizon Public School	- 20 mins
Mahatma International School	- 20 mins
Kendriya Vidyalaya	- 20 mins
Ryan International High School	- 20 mins
Prudence International School	- 20 mins



RESTAURANTS

Hotel Saheb	- 12 mins
Hotel Purva	- 15 mins
McDonald's	- 23 mins
Hotel Navratna	- 30 mins
Royal Rasoi Restaurant	- 30 mins



MALLS

D-Mart	- 27 mins
Orion Mall	- 27 mins
Little World Mall	- 28 mins
Prime Mall	- 32 mins
Seawoods Grand Central Mall	- 38 mins
Inorbit Mall	- 42 mins



HOSPITALS

Niramay Hospital	- 10 mins
Ashtavinayak Hospital	- 10 mins
Good Health Hospital	- 11 mins
Kalpataru Mother and Child Hospital	- 13 mins
Lifeline Hospital	- 15 mins
Terna Group Of Hospitals	- 20 mins
MGM Hospital, Kalamboli Junction	- 25 mins



BANKS

HDFC Bank	- 9 mins
Bank Of India	- 12 mins
IDBI Bank	- 12 mins
Bank Of Maharashtra	- 22 mins
AXIS Bank	- 27 mins
ICICI Bank	- 28 mins
Union Bank Of India	- 29 mins



CINEMA / THEATRES

PVR Cinema Panvel	- 27 mins
Big Cinema	- 29 mins
Maxus Theatre	- 30 mins
INOX Raghuleela	- 45 mins



TOWNSHIP SHUTTLE SERVICE



TOGETHER WE LEARN & MAKE A DIFFERENCE

SCHOOL ADMISSION STARTED

For all rental related queries, we request you to please approach our leasing desk at our Sales Office. Our team will be extremely happy to answer all your questions and show you around.

+91 (22) 61344315

Activities by Hiranandani Trust School

A few glimpses of the Hiranandani Trust School students exploring the world and developing skills through the unique Play Way Method of Teaching and the KWL chart (enquiry based learning).



Actual image of Hiranandani Trust School, Panvel

• A bird's eye view of the projects under construction

Projects Venus, Orion, Artemis, Selene, Flora, Zeus, Vesta, Hera

- Project Venus: Slab 28 has been completed
- Project Orion: Slab 29 has been completed
- Project Artemis: Slab 30 has been completed
- Project Selene: Slab 29 has been completed
- Project Flora: Slab 28 has been completed
- Project Zeus: Slab 25 has been completed
- Project Vesta: Slab 20 has been completed
- Project Hera: Slab 22 has been completed
- Podium construction: work in progress
- Retail area: work in progress



Actual Image of Hiranandani Fortune City, Panvel

Project Updates



Projects Flora, Selene and Artemis:
Construction work in full swing



Project Flora: Construction work in full swing



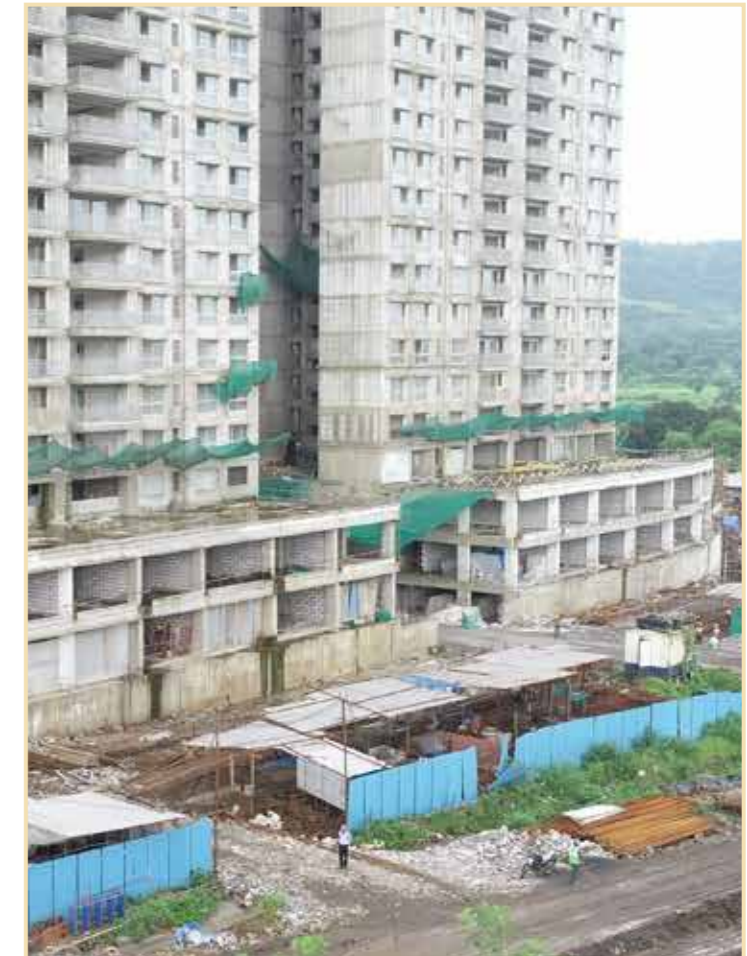
Podium construction work in full swing



Project Zeus: Construction work in full swing



Retail area under construction



Retail area under construction

Project Updates



Projects Hera and Vesta: Slab 22 and 20 have been completed respectively



Project Zeus: Slab 25 has been completed



Project Artemis: Slab 30 has been completed



Projects Venus and Orion: Slab 28 and 29 have been completed respectively



Projects Flora and Selene: Slab 28 and 29 have been completed respectively



Get your friend to
experience the
Hiranandani Life!

Actual image of Sales Office, Panvel

**Give your friend a guided tour of Hiranandani Fortune City and let them
experience a modern integrated township in a future-ready location.**

Lots of offers to choose from!

To avail the scheme, please get in touch with us today

Other Projects

PROJECTS AT MOUNT ALTERRA, KHANDALA:

LUXURY PLOTTED DEVELOPMENT 850 SQ.MTRS. ONWARDS

The projects at Mount Alterra, Khandala are marketed by Hiranandani Communities. The premium villa plots are located at over 500 mtrs. above the mean sea level. The projects at Mount Alterra are located about 60 kms away from Mumbai and Pune.

For more enquires, call: **+91 (22) 61739741**

HIRANANDANI SANDS, NAGAON, ALIBAUG:

LUXURY PLOTTED DEVELOPMENT 500 SQ.MTRS. ONWARDS

Pristine villa plots located near the coast. Unspoilt beaches, forests & a vibrant ecosystem surrounds the project at Nagaon. Hiranandani Sands is located in close proximity to the city of Alibaug, that has sea-transport connectivity to the Gateway of India, Mumbai.

For more enquires, call: **+91 (22) 33578443**

HIRANANDANI PARKS, ORAGADAM, CHENNAI:

PREMIUM VILLA PLOTTED DEVELOPMENT 111.5 - 279 SQ.MTRS. | LUXURY APARTMENTS 3-BHKS | LUXURY VILLAS 1018 SQ.FT. ONWARDS

Premium 2 & 3 Bed Residences, Villas & Villa Plots in a massive 300 acres township, with over 40 sport activities. The location, Oragadam has been touted by the government as 'India's fastest growing industrial corridor'.

For more enquires, call: **+91 (44) 66949038**

GREENBASE INDUSTRIAL & LOGISTICS PARKS, INDIA:

At 11 destinations across the country, Greenbase provides spaces for Plug-n-play facilities for light industrial use, Built-to-suit warehousing solutions and cold storage.

For more enquires, call: **+ 91 7506805746**

HIRANANDANI SIGNATURE, GIFT CITY, AHMEDABAD:

India's first designated IFSC building, Hiranandani Signature was constructed in record time & inaugurated by Shri. Narendra Modi, the Prime Minister of India. It has 16 floors built to international standards, with over 4,60,000 sq. ft. of usable commercial space.

For more enquires, call: **+91 7961343727**



Email: hfc@hrealty.com

Web: www.hiranandanicomunities.com

Site Address: Bhokharpada, Taluka - Panvel, District - Raigad, NH-4, Maharashtra - 410 206.

Corporate Address: 1st Floor, Olympia, Central Avenue, Hiranandani Business Park, Hiranandani Gardens, Powai, Mumbai - 400 076.

Panvel Disclaimer: The said project is mortgaged with Axis Trustee Services Ltd. and financed by State Bank of India, PNB Housing Finance Ltd. and Axis Bank. NOC shall be provided on demand from the lenders. The project has been registered via MahaRERA registration number: Argus: P52000000265, Atlas: P52000000262, Aura: P52000000263, Aurora: P52000000256, Artemis: P52000001381, Clio: P52000000184, Flora: P52000001514, Helios: P52000000261, Hermes: P52000000267, Hera: P52000001513, Mellona: P52000000260, Minerva: P52000000284, Orion: P52000002990, Selene: P52000002730, Venus: P52000001518, Vesta: P52000001078, Zeus: P52000001064 and is available on the website <https://maharera.mahaonline.gov.in> under registered projects.

Khandala Disclaimer: The projects have been registered via MahaRERA registration number, Ajanta Farms: P52000000525, Anjali Farms: P52000000530, Besto Farms: P52000000532, Classic Commercial Services: P52000000430, Greenfield Resorts: P52000000468, Kapur Farms: P52000000881, Niranjan Investments: P52000000606, Supriya Farms: P52000000536, Joy Farms: P52000001190, Ajanta Farms: P52000013735, Anjali Farms: P52000013736, Besto Farms: P52000013911, Greenfield Resorts: P52000013734, Joy Farms: P52000013869, Kapur Farms: P52000013913, Krishnagiri Farms: P52000013868, Niranjan Investments: P52000013731, Supriya Farms: P52000013870, Yash Farms: P52000013912 and is available on the website <https://maharera.mahaonline.gov.in> under registered projects.

Chennai Disclaimer: The said project is mortgaged to Axis Trustee Services Ltd and Financed by Axis Bank and PNB Housing Finance Ltd. NOC/ROC shall be provided on demand from the lenders. The project has been registered via TNRERA registration number: TN/01/LAYOUT/0046/2018 and is available on the website <http://www.tnrera.in> under registered projects.

Alibaug Disclaimer: MahaRERA Registration No. P52000001001 available at website: <https://maharera.mahaonline.gov.in>

Greenbase: The information and visuals contained herein are indicative in nature. Greenbase reserves the rights to make amendments as and when it feels necessary, without any prior notice. No representation or warranty is made or intended as to the accuracy of the information provided. Visuals, drawings, plans or sketches shown are only an architect's / visual designer's impression and are subject to approvals from the local authorities.

Ahmedabad: The content mentioned herein is purely indicative and conceptual and nor will be part of the agreement and have no legal bindings on us. The images and materials are for representation purposes. Only the Actual Agreement shall be binding on the Parties and the actual layouts, and specifications of the Units stated therein, shall be final and conclusive of the agreement terms offered to the Lessee by the Company. Furniture, amenities and fixtures shown may not be part of the actual offering. All units are bare shell. Furnishing shown on all floor plans is for illustrative purpose only. The company reserves the right to amend the units, color scheme, specifications and amenities etc., without notice. The said project is mortgaged with Yes Bank Ltd. and financed by Yes Bank Ltd.