

**h** hiranandani  
communities  
a niranjan hiranandani initiative

**Email:** [hparks@hrealty.com](mailto:hparks@hrealty.com)

**Web:** [www.hiranandanicommunities.com](http://www.hiranandanicommunities.com)

**Site Address:** Thriveni Nagar, Near Daimler, Oragadam, Chennai - 603 204. Tamil Nadu.

**Corporate Address:** 1<sup>st</sup> Floor, Olympia, Central Avenue, Hiranandani Business Park, Hiranandani Gardens, Powai, Mumbai - 400 076.

**Chennai Disclaimer:** The said project is mortgaged to Axis Trustee Services Ltd and Financed by Axis Bank and PNB Housing Finance Ltd. NOC/ROC shall be provided on demand from the lenders. The project has been registered via TNRERA registration number: TN/01/LAYOUT/0046/2018 and is available on the website <http://www.tnrera.in> under registered projects.

**Panvel Disclaimer:** The said project is mortgaged with Axis Trustee Services Ltd. and financed by State Bank of India, PNB Housing Finance Ltd. and Axis Bank. NOC shall be provided on demand from the lenders. The project has been registered via MahaRERA registration number: Argus: P52000000265, Atlas: P52000000262, Aura: P52000000263, Aurora: P52000000256, Artemis: P52000001381, Clio: P52000000184, Flora: P52000001514, Helios: P52000000261, Hermes: P52000000267, Hera: P52000001513, Mellona: P52000000260, Minerva: P52000000284, Orion: P52000002990, Selene: P52000002730, Venus: P52000001518, Vesta: P52000001078, Zeus: P52000001064 and is available on the website <https://maharera.mahaonline.gov.in> under registered projects.

**Khandala Disclaimer:** The projects have been registered via MahaRERA registration number, Ajanta Farms: P52000000525, Anjali Farms: P52000000530, Besto Farms: P52000000532, Classic Commercial Services: P52000000430, Greenfield Resorts: P52000000468, Kapur Farms: P52000000881, Niranjan Investments: P52000000606, Supriya Farms: P52000000536, Joy Farms: P52000001190, Ajanta Farms: P52000013735, Anjali Farms: P52000013736, Besto Farms: P52000013911, Greenfield Resorts: P52000013734, Joy Farms: P52000013869, Kapur Farms: P52000013913, Krishnagiri Farms: P52000013868, Niranjan Investments: P52000013731, Supriya Farms: P52000013870, Yash Farms: P52000013912 and is available on the website <https://maharera.mahaonline.gov.in> under registered projects.

**Alibaug Disclaimer:** MahaRERA Registration No. P52000001001 available at website: <https://maharera.mahaonline.gov.in>

**Greenbase:** The information and visuals contained herein are indicative in nature. Greenbase reserves the rights to make amendments as and when it feels necessary, without any prior notice. No representation or warranty is made or intended as to the accuracy of the information provided. Visuals, drawings, plans or sketches shown are only an architect's / visual designer's impression and are subject to approvals from the local authorities.

**Ahmedabad:** The content mentioned herein is purely indicative and conceptual and nor will be part of the agreement and have no legal bindings on us. The images and materials are for representation purposes. Only the Actual Agreement shall be binding on the Parties and the actual layouts, and specifications of the Units stated therein, shall be final and conclusive of the agreement terms offered to the Lessee by the Company. Furniture, amenities and fixtures shown may not be part of the actual offering. All units are bare shell. Furnishing shown on all floor plans is for illustrative purpose only. The company reserves the right to amend the units, color scheme, specifications and amenities etc., without notice. The said project is mortgaged with Yes Bank Ltd. and financed by Yes Bank Ltd.



Actual image Hiranandani Parks, Chennai



Actual image Hiranandani Parks, Chennai



---

Foreword	06
Project Updates	08
Other Projects by Hiranandani Communities	30

---



Bird's eye view of Hiranandani Parks, Chennai

# Foreword

The 'h for happiness' brand philosophy of Hiranandani Communities arches over multiple touch points. It resonates the value of quality construction, magnificent architecture, open landscaped spaces, and so much more. It resonates our endeavor to fulfil our promise to you, of delivering a global township; filled with amenities and world-class civic infrastructure, and vibrant community life.

The construction of the projects at Hiranandani Parks, Oragadam are in full swing. For us, nothing is more important than delivering your homes to you, therefore we'd like to share progress pictures and would like to invite you to personally visit and witness the development yourself.

**The Editorial Team,**  
Hiranandani Communities



# Project Updates



## High rise buildings - North

- Buildings Wilton I & II and Windsor I & II – handed over to facility management services (FMS)
- Podium level hardscaping & landscaping is completed and fixing of the children's play equipment & gazebos in progress
- 375 apartments handed over, 350 apartments occupied in The Highlands, North
- Leasing Desk: To rent out your apartment, we have created a special leasing desk. You may get in touch with Mr. Viswam for the same via mail - pviswam@hrealty.com

## High rise buildings - South

- 1<sup>st</sup> stage of finishing work completed in all the towers namely Warwick I & II, Chartwell I & II, Chatsworth I & II, Clarendon I & II
- Tiles, marble, door shutter fixing & painting work is in progress in Warwick I & II and Chartwell I & II
- Mechanical, Electrical and Plumbing (MEP) work is in progress in all the towers
- Lifts' guide rail fixing work is in progress



## Villa plotted development

- 18m main road opened for traffic
- Phase I (10 acres) – Infrastructure work fully completed along with landscaping
- Phase II (34 acres) – Infrastructure work fully completed along with landscaping



## Villa residences

- 3 luxury villas is under construction
- First coat of paint has been applied
- High quality civic infrastructure in the form of roads, power, water, telecommunications & sewerage have been provided



## Township amenities

- A 30-bed hospital is now open for residents and public
- A 14000 sq.ft. fully air-conditioned Auditorium / Convention center is ready for weddings, seminars, corporate off-sites and other activities
- 30+ sporting facilities operational

Images shot at Hiranandani Parks, Chennai



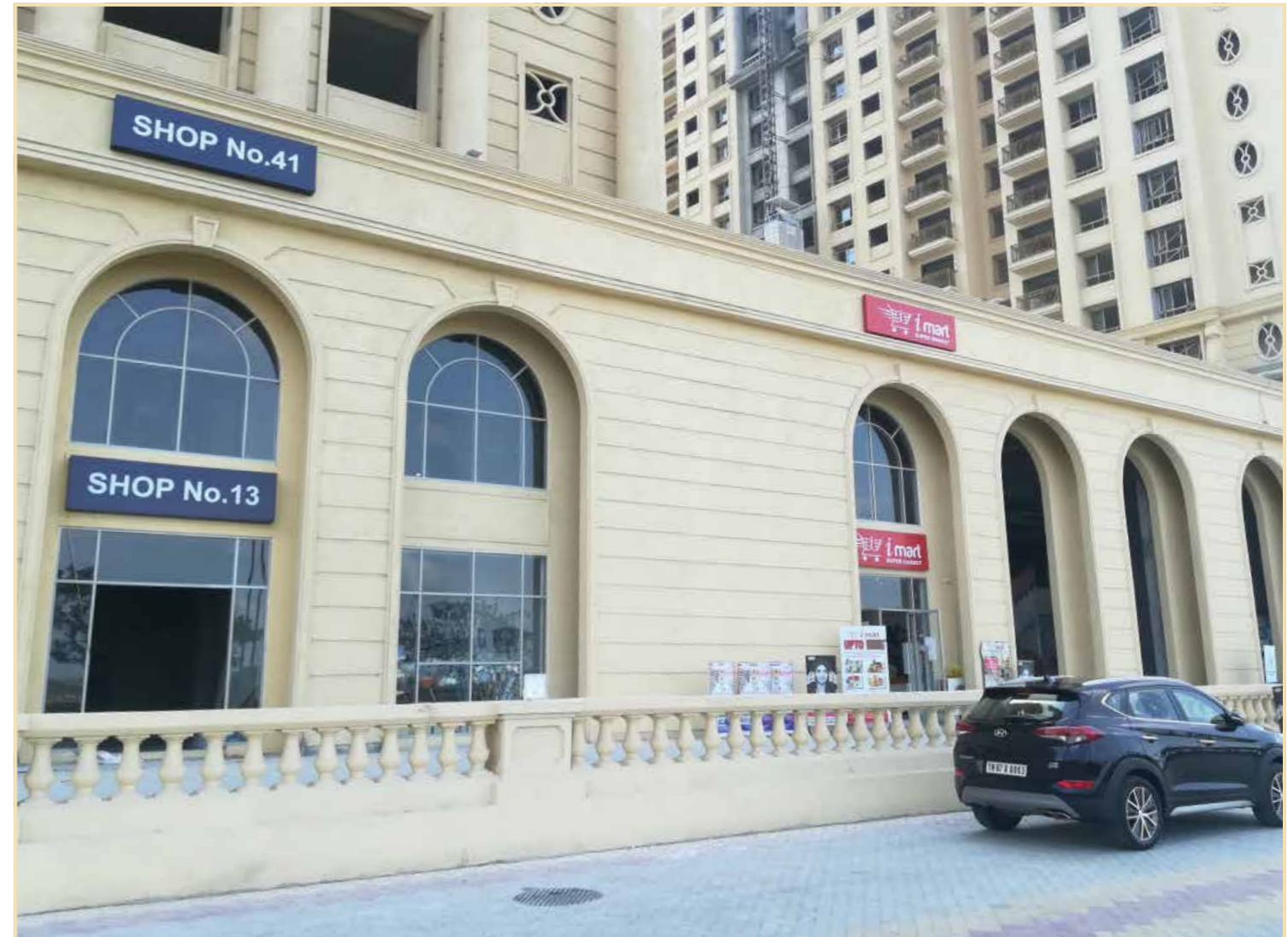
# Project Updates



The Highlands (High Rise Buildings) - North:  
Podium landscape garden



The Highlands (High Rise Buildings) - North:  
Podium area



The Highlands (High Rise Buildings) - South:  
Retail zone shops ready for fit-outs. I-Mart, a retail convenience store & Zephyr Bar & Restaurant now functional



The Highlands (High Rise Buildings) - North: Podium horticulture & beautification work in progress



The Highlands (High Rise Buildings) - South:  
Retail zone lobby work in progress



The Highlands (High Rise Buildings) - South: Retail zone security cabin and entrance gate construction in progress

# Project Updates



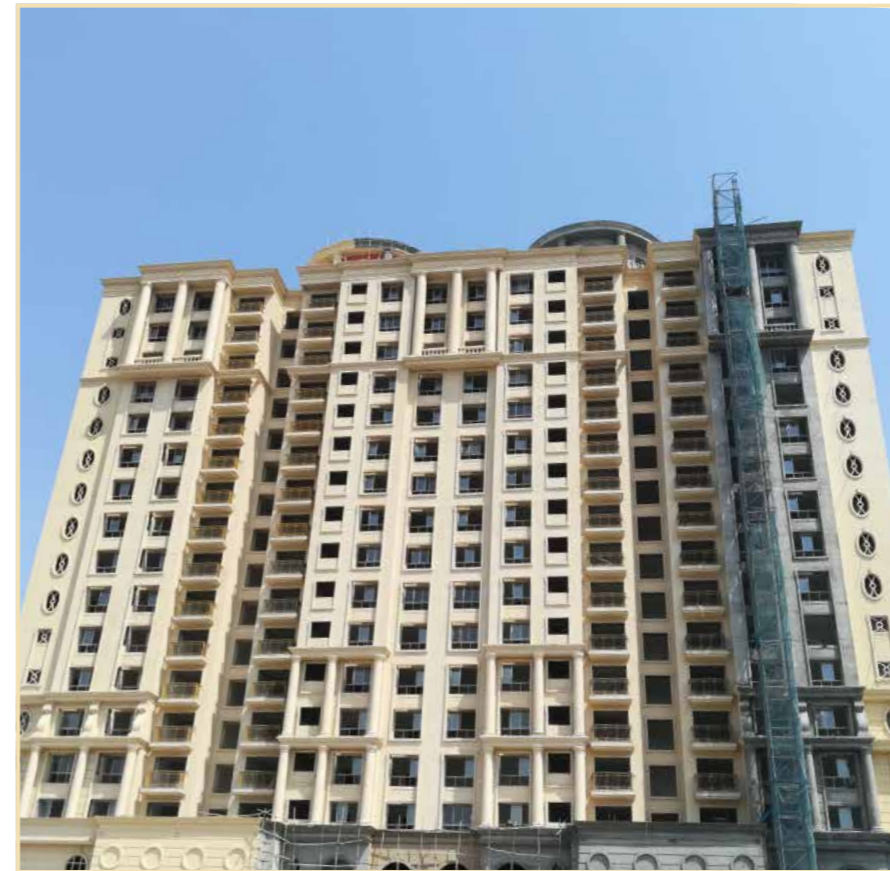
The Highlands South, Warwick I & II: Front facade work in progress



The Highlands South, Warwick I & II: Bedroom finishing work in progress



The Highlands South, Warwick I & II: Kitchen finishing work in progress



The Highlands South, Chartwell I & II: Front facade work in progress



The Highlands South, Chartwell I & II: Internal flat finishing work in progress



The Highlands South, Warwick I & II: Lift maintenance room and terrace finishing work in progress



The Highlands South, Warwick I & II: Lift maintenance room and terrace finishing work in progress



The Highlands South, Chartwell I & II: Life maintenance room and terrace finishing work in progress



The Highlands South, Chartwell I & II: Internal flat finishing work in progress



The Highlands South, Chartwell I & II: Internal flat finishing work in progress



The Highlands South, Chartwell I & II: Entrance porch construction work in progress

# Project Updates



The Highlands South, Chatsworth I & II: Front facade finishing work in progress



The Highlands South, Chatsworth I & II: Life maintenance room and finishing work in progress



The Highlands South, Clarendon I & II: Lift maintenance room and terrace finishing work in progress



The Highlands South, Chatsworth I & II: Security cabin construction in progress



The Highlands South, Clarendon I & II: Front facade finishing work in progress



## Project Updates

Beautifully maintained community of our low-rise buildings.



Cluster view of our low-rise buildings, with The Highlands, South in the background



Bird's eye view of our low-rise buildings from The Highlands, South



Landscaped garden within the low-rise buildings cluster



Swimming pool of the clubhouse located within the low-rise building cluster



Fountain and landscaping within the low-rise buildings cluster

## Project Updates



Palm Avenue: The arterial road to Hiranandani Parks.  
Features include 6-lane blacktop road, paved pathways, street landscaping & LED lighting



Maple Gate entrance to the Hiranandani Parks township



Landscaping and Palm Avenue with The Highlands, North in the background

## Project Updates

# THE WILLOWS

VILLA RESIDENCES

- A prized addition to our green community, the aesthetically crafted premium villas are located right in the heart of our township
- The residents will have access to all the recreation and leisure facilities at Hiranandani Parks



Front elevation of The Willows:  
finishing work in progress



Rear elevation of The Willows: finishing work in progress



Architectural rendering of The Willows

## Project Updates



- Our plots of lands take a special pride of place amidst the various statuesque towers and lush green landscapes
- All our plots are DTCP Approved and RERA registered. The road works and the landscaping surrounding the roads are nearing completion
- Streetlights have been installed and are now functional



Tierra: view from the upcoming club-house



Tierra: View of plots from 18 mtrs. road at Hiranandani Parks



Tierra: View from plots with The Highlands towers in the background



Bird's eye view of Tierra: Villa plotted development



Tierra: Internal landscaped roads with street lights

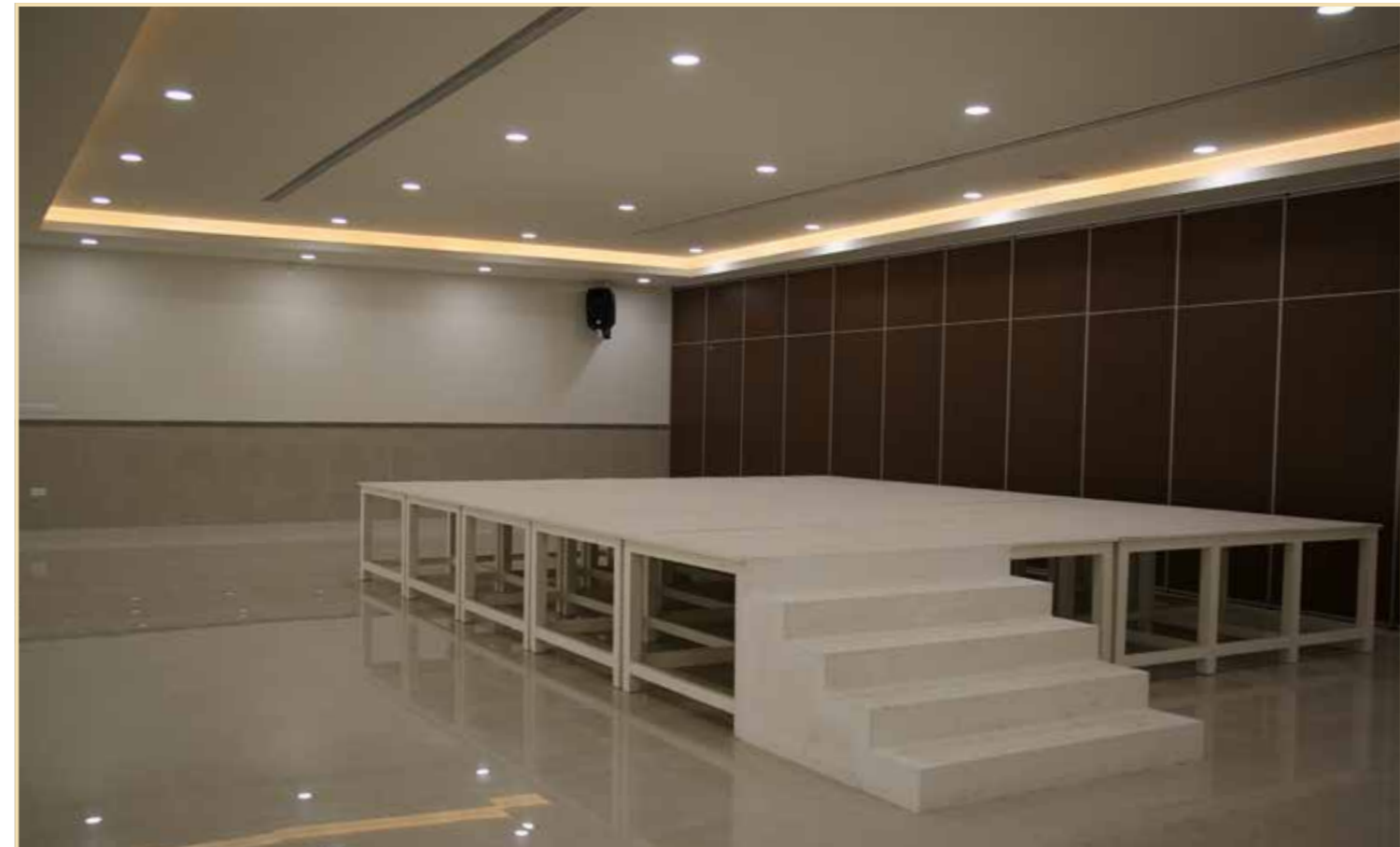


**THRIVENI  
AUDITORIUM AND  
CONVENTION CENTER**  
ORAGADAM - CHENNAI  
— a niranjan hiranandani initiative —

- The Thriveni Auditorium and Convention Center within the Hiranandani Parks Township is completed
- The auditorium will have a capacity to host over 700 guests in a single event. The interiors have been completed, with adequate covered space for cooking provided
- Also, under development is a garden lawn with landscaping. The Auditorium will have ample parking spaces available



Thriveni Auditorium view from entrance door



Auditorium stage base at the Thriveni Auditorium



Thriveni Auditorium: facade is completed



Main kitchen at Thriveni Auditorium



## HIRANANDANI PARKS HOSPITAL

- The Hiranandani Parks Hospital is now operational
- A 30-bed hospital, having 11300 sq.ft. built up area
- The Hospital is equipped with an O.T., I.C.U units
- The Hospital also has a 24x7 pharmacy and an ambulance on standby for emergencies



24x7 Pharmacy at Hiranandani Parks Hospital



Facade view and entry from Thriveni road for Hiranandani Parks Hospital



Hiranandani Parks Hospital, entry from Hiranandani Parks



Hiranandani Parks Hospital Basic Life Support ambulance

## Project Updates

Agastheeswarar Temple construction has been completed, set amidst Tierra, our villa plotted development. The Highlands have a beautiful view of these temples. The temples are dedicated to Lord Bala Tripurasundari, Lord Agastheeswarar, Lord Vishnu, Lord Siddhivinayaka, Lord Murugan, Lord Kalabhairava. The temple is one to one and all.



# Other Projects

## PROJECTS AT MOUNT ALTERRA, KHANDALA:

The projects at Mount Alterra, Khandala are marketed by Hiranandani Communities. The premium villa plots are located at over 500 mtrs. above the mean sea level. The projects at Mount Alterra are located about 60 kms away from Mumbai and Pune.

For more enquires, call: **+91 (22) 61739741**

## HIRANANDANI SANDS, NAGAON, ALIBAUG:

Pristine villa plots located near the coast. Unspoilt beaches, forests & a vibrant ecosystem surrounds the project at Nagaon. Hiranandani Sands is located in close proximity to the city of Alibaug, that has sea-transport connectivity to the Gateway of India, Mumbai.

For more enquires, call: **+91 (22) 33578443**

## HIRANANDANI FORTUNE CITY, PANVEL, NAVI MUMBAI:

Spacious Studio, 1, 2 & 3 Bed Residences in a massive 588 acres township. Located in close proximity to the Mumbai - Pune Expressway, with availability of commercial spaces also.

For more enquires, call: **+91 (22) 33578486**

## GREENBASE INDUSTRIAL & LOGISTICS PARKS, INDIA:

At 11 destinations across the country, Greenbase provides spaces for Plug-n-play facilities for light industrial use, Built-to-suit warehousing solutions and cold storage.

For more enquires, call: **+ 91 7506805746**

## HIRANANDANI SIGNATURE, GIFT CITY, AHMEDABAD:

India's first designated IFSC building, Hiranandani Signature was constructed in record time & inaugurated by Shri. Narendra Modi, the Prime Minister of India. It has 16 floors built to international standards, with over 4,60,000 sq. ft. of usable commercial space.

For more enquires, call: **+91 7961343727**

KHANDALA, MAHARASHTRA

# MOUNT ALTERRA

A private and quiet world far from the clamour and congestion of the metropolises. Select from vistas of plotted development, Another Earth, truly.

LUXURY  
PLOTTED DEVELOPMENT  
850 sq.mtrs. onwards

FOR MORE INFORMATION, CALL US ON:

**+91 (22) 61739741**

Actual view from plot located at Mount Alterra



ALIBAUG, MAHARASHTRA

# HIRANANDANI SANDS

A resort destination spanning over 200 acres of land curated for those who love to live by the sea.

LUXURY  
PLOTTED DEVELOPMENT  
500 sq.mtrs. onwards

FOR MORE INFORMATION, CALL US ON:  
**+91 (22) 33578443**

Actual image of Nagaon Beach, Alibaug

PANVEL, MAHARASHTRA

# HIRANANDANI FORTUNE CITY

Fostering global communities, our projects are home to well-planned residences, office spaces, and retail and leisure, living up to the philosophy of Live Work and Play.

PREMIUM APARTMENTS  
Studio to 3 BHKs

FOR MORE INFORMATION, CALL US ON:  
**+91 (22) 33578486**

Actual image of sales office, Panvel

— GANDHINAGAR, GUJARAT —  
**HIRANANDANI SIGNATURE**

India's first designated IFSC.

OFFICE SUITES IN INDIA'S  
FIRST IFSC



FOR MORE INFORMATION, CALL US ON:  
**+91 7961343727**

Actual image of Hiranandani Signature, Gujarat

— PAN-INDIA —  
**GREENBASE, INDUSTRIAL & LOGISTICS PARKS**

Built-to-suit Industrial Facilities | Cold Storage | Warehouse Developments  
Plug n Play facilities for light industrial use.

**NORTH: GURGAON**  
**WEST: PUNE, NASHIK, BHIWANDI, SANATHAL**  
**EAST: DURGAPUR**  
**SOUTH: ORAGADAM**



FOR MORE INFORMATION, CALL US ON:  
**+ 91 7506805746**

Image used for representation purpose only